


# COLLINET

JARDIN FLEURI

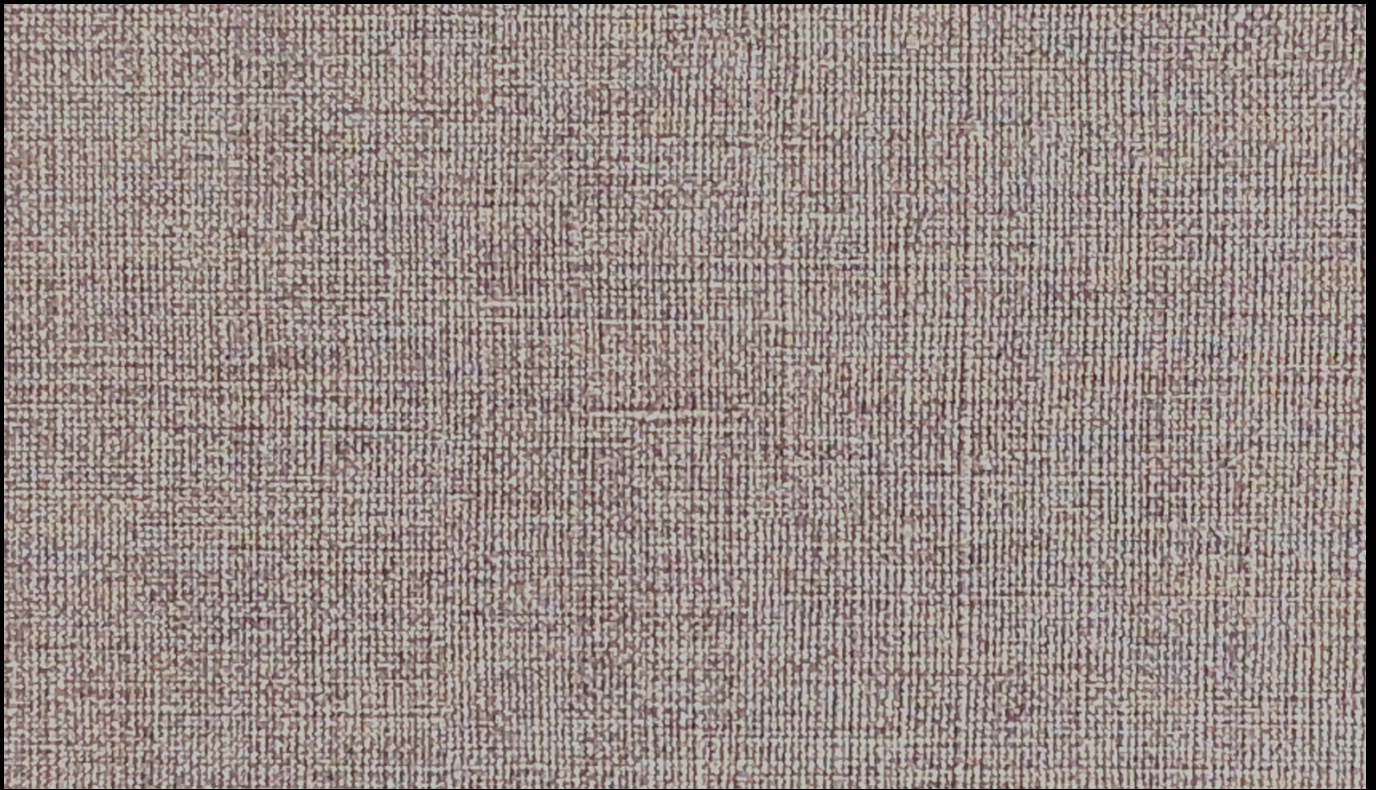
vol 8



  
COLLINET  
MORILLER & SIBRES

135 ans  
depuis 1887





Mouse 271



Ivory 202



Piedra 207



Beige 218



Stone 284



Light 270



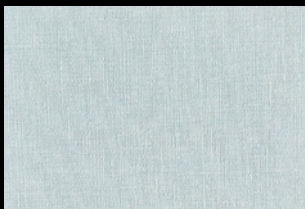
Mouse 271



Gris 275



Garnet 225



Sky 263



Acuatic 261



Verde 240



Jungle 245



Brown 223

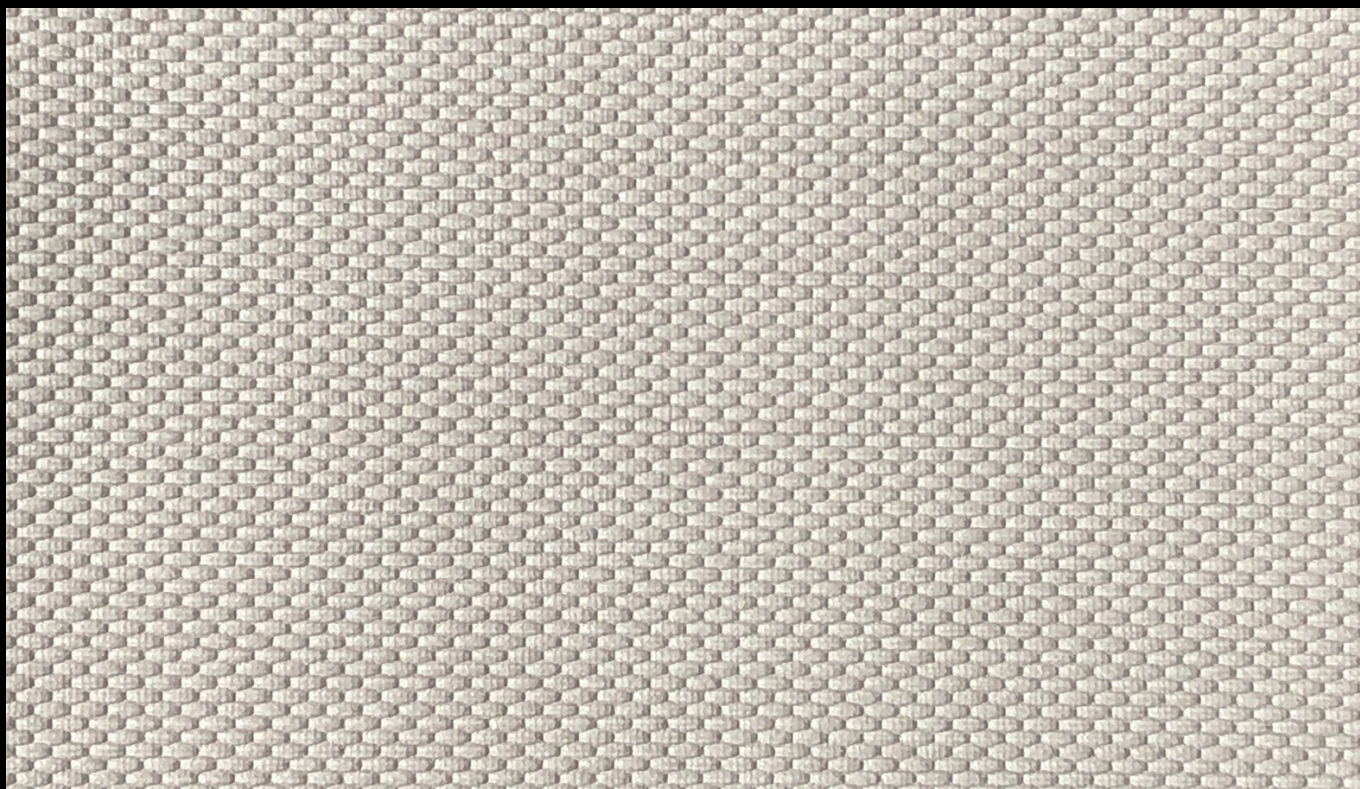


Dark 277

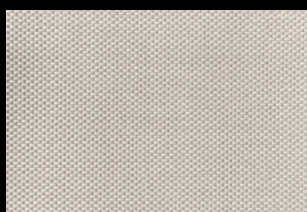


Navy 269





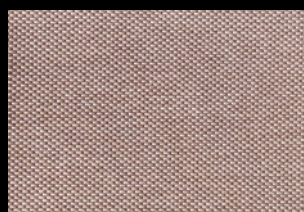
Ivory 802



Ivory 802



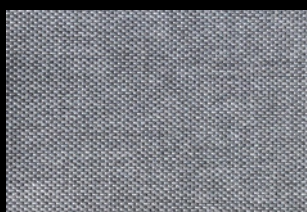
Piedra 807



Beige 818



Stone 884



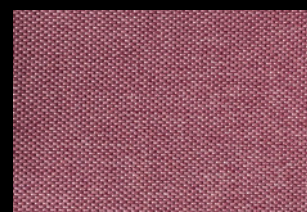
Light 870



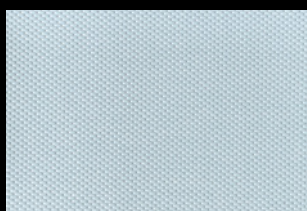
Mouse 871



Gris 875



Garnet 825



Sky 863



Acuatic 861



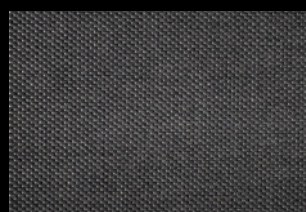
Verde 840



Jungle 845



Brown 823



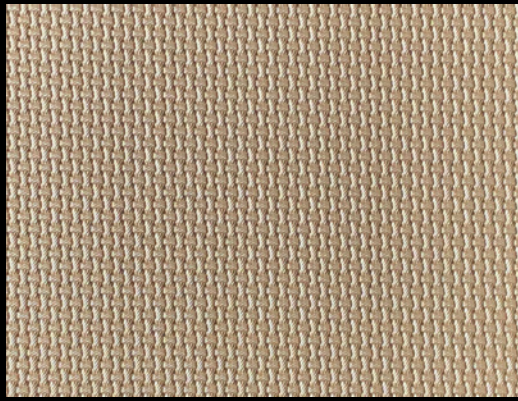
Dark 877



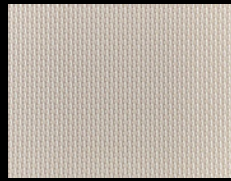
Navy 869



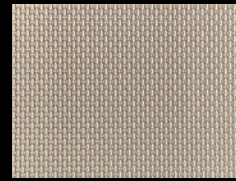
# MIMOSA



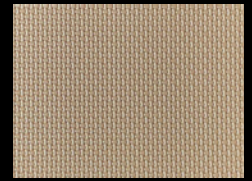
Taupe



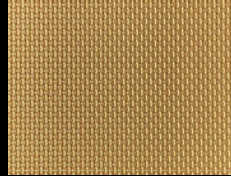
Bianco



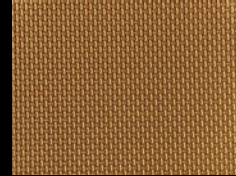
Alu



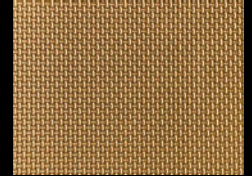
Taupe



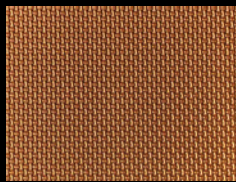
Oro



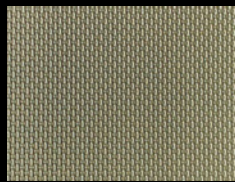
Cooper



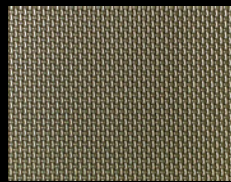
Vison



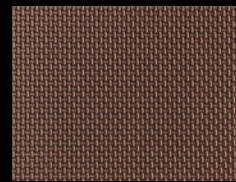
Bronce



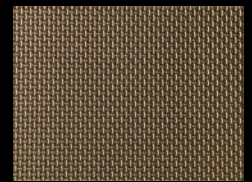
Salvia



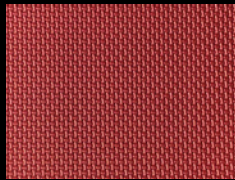
Anthracite



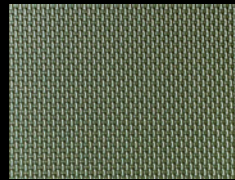
Carro



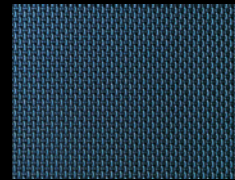
Titan



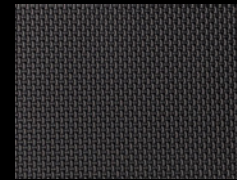
Vino



Oltromare



Navy



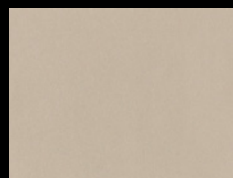
Zero

# NERINE

High System PU (HSPU)



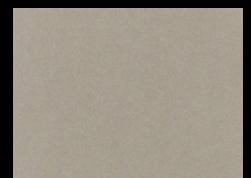
Roca



Lectro



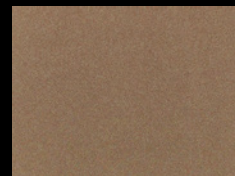
Tesla



Silver



Grey



Tronic



Taupe



Cupro



Vega



Roca



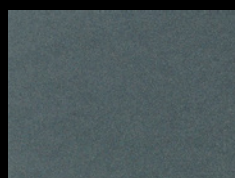
Brown



Noir



Salvia



Oltromare



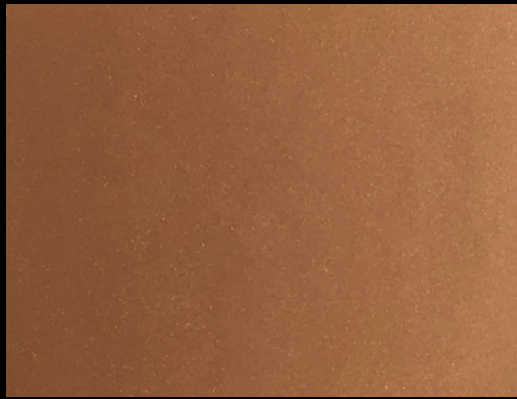
Navy



Apple



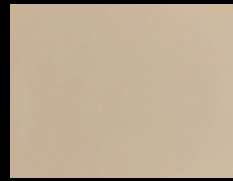
# LANTANA



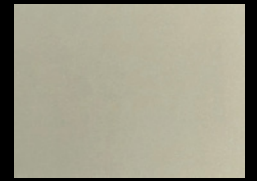
Bronze



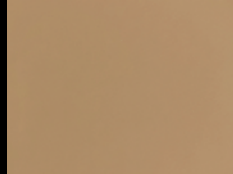
Bianco



Taupe



Alu



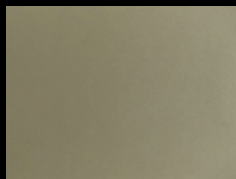
Vison



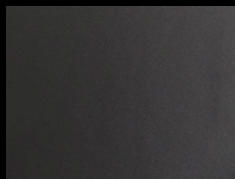
Cooper



Bronze



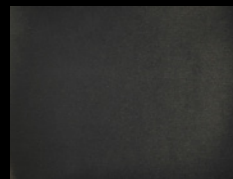
Salvia



Anthracite



Carro



Titan



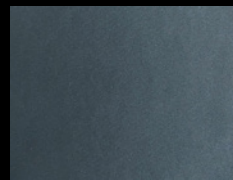
Zero



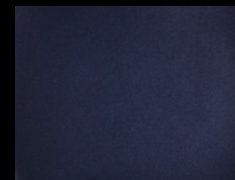
Oro



Coral



Oltramare



Night

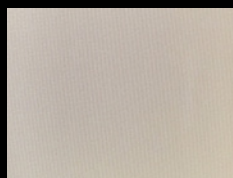
# YUCCA



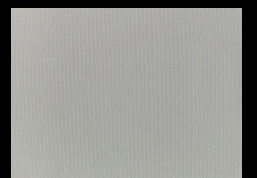
Salvia



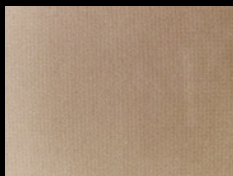
Bianco



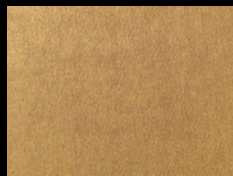
Taupe



Alu



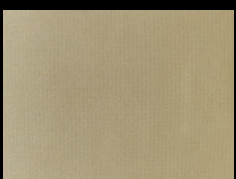
Vison



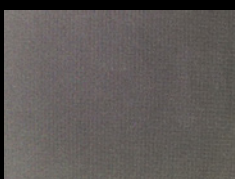
Cooper



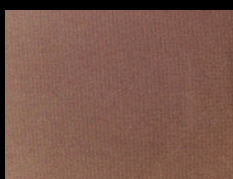
Bronze



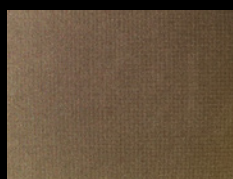
Salvia



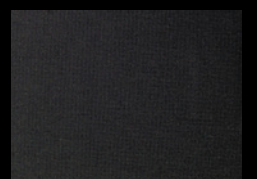
Anthracite



Carro



Titan



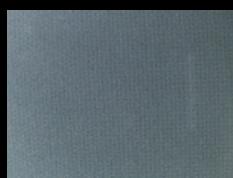
Zero



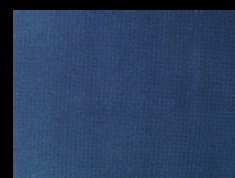
Oro



Vino

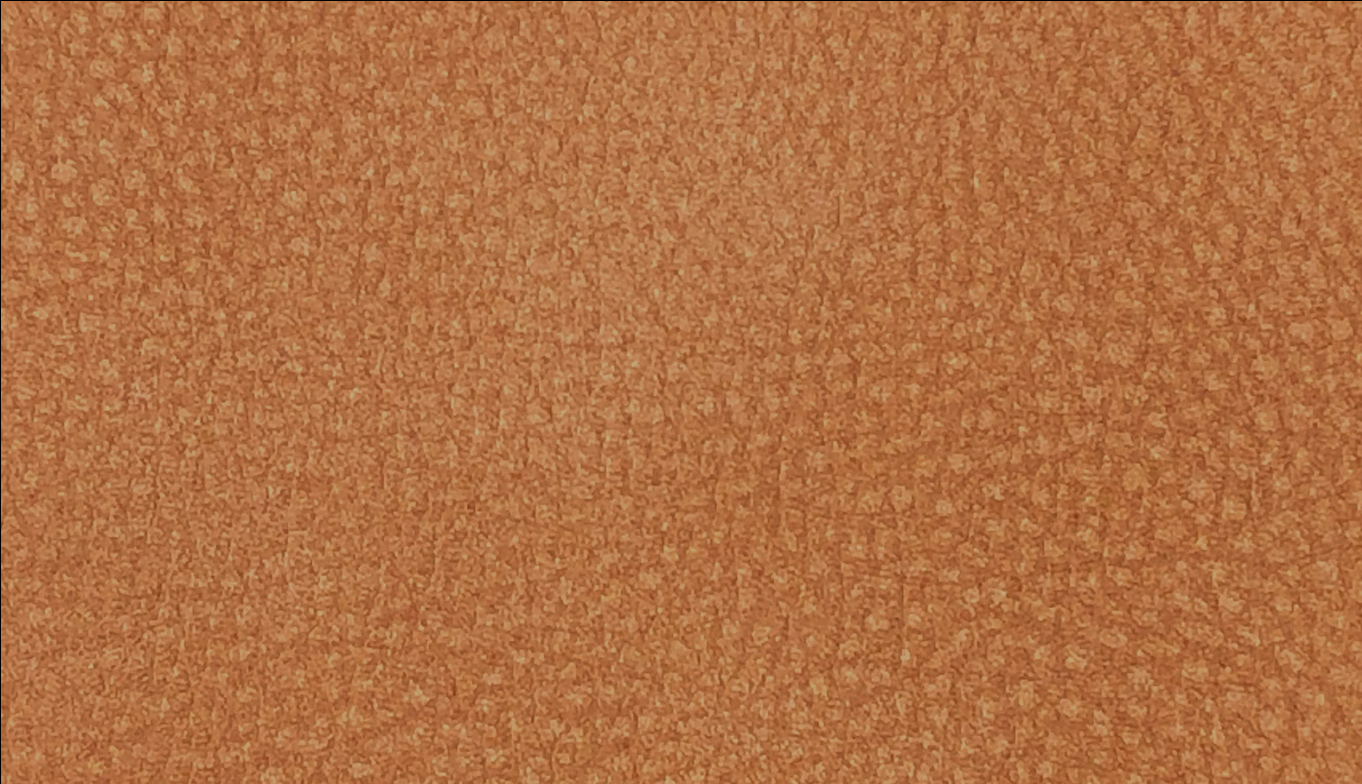


Oltramare

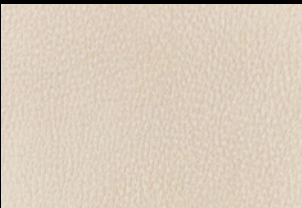


Navy





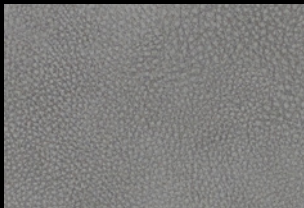
Acorn



Nepal



London



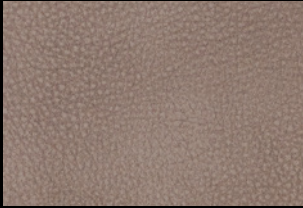
Moon



Mouse



Rustic



Toscana



Espresso



Brownie



Shadow



Slate



Anthracite



Midnight



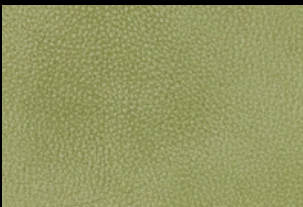
Sol



Caramel



Acorn



Selva



LOTUS



LOTUS

airflow<sup>®</sup>



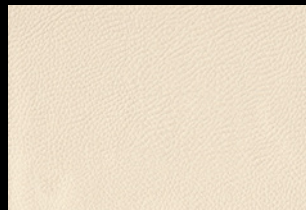
Sepia 219



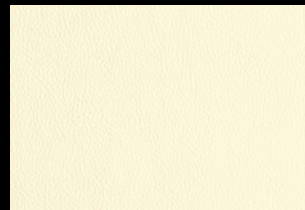
Beige 205



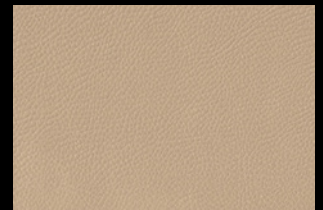
Blanco 200



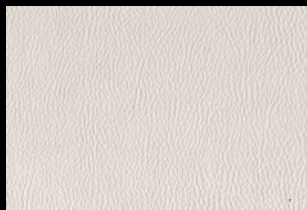
Crema 202



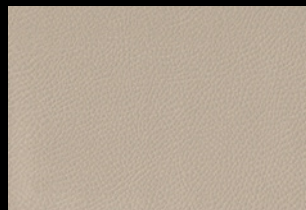
Crudo 204



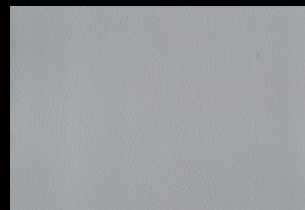
Beige 205



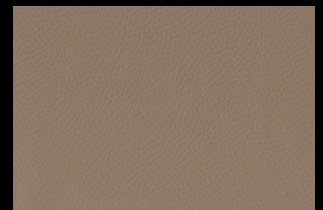
Gris 201



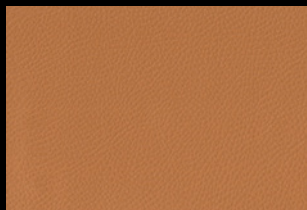
Tierra 207



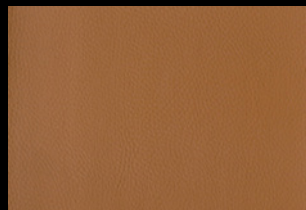
Urban 270



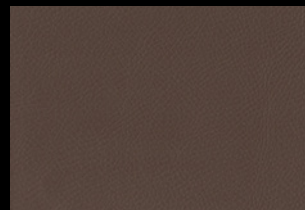
Castaño 218



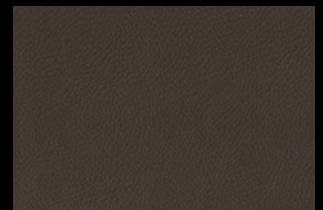
Ocre 210



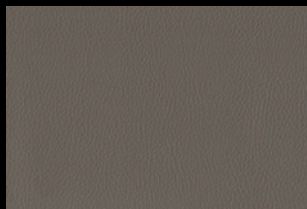
Teja 215



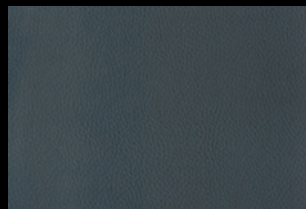
Chocolate 220



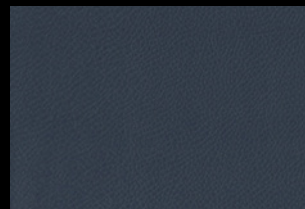
Marron 223



Sepia 219



Arcilla 275



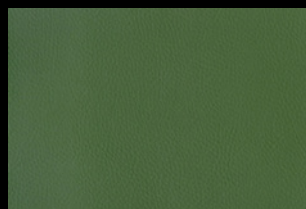
Marino 269



Negro 290



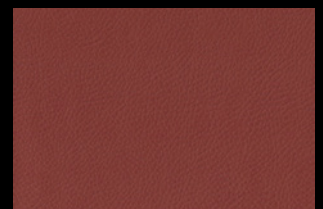
Salvia 240



Green 241













Rose 227



Granate 225



		MELISE ACACIA	MIMOSA LANTANA* YUCCA	NERINE	OXALIS	LOTUS LOTUS Airflow*
 <b>Composition</b>	Endroit <i>Surface</i>	100% Vinyl	92% Vinyl 8% PU	100% PU	100% PU	92% Vinyl 8% PU
	Envers <i>Backing</i>	100% Polyester	100% Polyester	67% Polyester 33% Cotton	100% Polyester	100% Polyester
 <b>Largeur Width</b>		140 cm	130 cm *140 cm	140 cm	140 cm	140 cm
 <b>Poids Weight</b>		830 g/m <sup>2</sup>	660 g/m <sup>2</sup>	520 g/m <sup>2</sup>	690 g/m <sup>2</sup>	680 g/m <sup>2</sup> *850 g/m <sup>2</sup>
 <b>Épaisseur Thickness</b>		1 mm	1,1 mm	1,1 mm	1,3 mm	1,1 mm €2,5 mm
 <b>Solidité à la lumière Color fastness</b>		6	5	4	4	5
 <b>Résistance à la traction Tensile strength</b>	Chaîne <i>Weft</i>	> 350 N/cm	> 500 N/cm	> 100 N/cm	> 100 N/cm	450 N/5 cm
	Trame <i>Warp</i>	> 350 N/cm	> 500 N/cm	> 90 N/cm	> 90 N/cm	650 N/5 cm
 <b>Résistance à l'allongement Breaking elongation</b>	Chaîne <i>Weft</i>	90%	30%	30%	30%	30%
	Trame <i>Warp</i>	40%	50%	50%	50%	50%
 <b>Résistance à la déchirure Tear strength</b>	Chaîne <i>Weft</i>	> 30 N/cm	30 N/cm	60 N/cm	60 N/cm	60 N/cm
	Trame <i>Warp</i>	> 35 N/cm	25 N/cm	40 N/cm	40 N/cm	40 N/cm
 <b>Résistance à l'abrasion Abrasion</b>		> 200.000 cycles	> 200.000 cycles	> 200.000 cycles	> 150.000 cycles	> 200.000 cycles
 <b>Norme Non Feu Fire Retardant</b>		UNE 1021 <i>Parts 1-2</i> BS5852 <i>Cigarette &amp; Match</i>	UNE 1021 <i>Parts 1-2</i> BS5852 <i>Cigarette &amp; Match</i>	UNE 1021 <i>Parts 1-2</i> BS5852 <i>Cigarette &amp; Match</i>	UNE 1021 <i>Parts 1-2</i> BS5852 <i>Cigarette &amp; Match</i>	UNE 1021 <i>Parts 1-2</i> BS5852 <i>Cigarette &amp; Match</i>



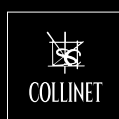
Est conforme à la norme REACH STANDARD. Est exempt de phtalates.  
*Meets Reach Standar. Is free phthalates.*

**Eco&free**



Traitement anti tache.  
*Stain resistant treatment.*

**Protech**



**135** ans  
depuis 1887

Collinet SAS  
4, rue du Moulin - 55130 Baudignécourt France  
Tél. : (33) 0-329 89 61 06 - fax : (33) 0-329 89 77 01  
E-mail : contact@collinet-sieges.fr - www.collinet-sieges.fr