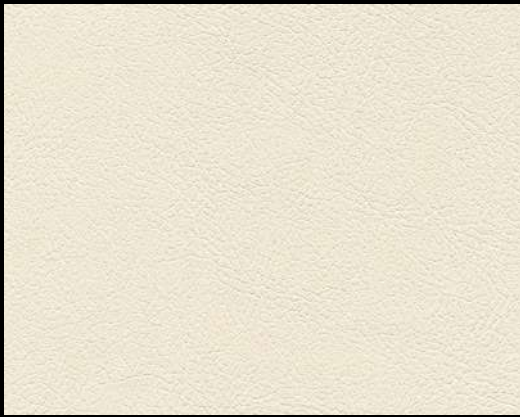


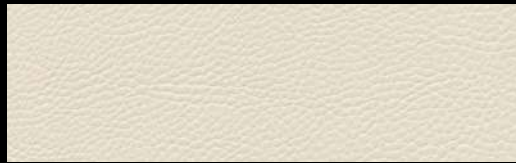
COLLINET

—
NUANCES
DU MONDE





Sorrento EN lightbeige



Sotega FLS porcelain



Sotega FLS beige



Supprimé

Topana FLS sand



Paratexa NF birch



Sotega Stars platino



Sorrento EN birch



Supprimé

Topana FLS cashmere



Torino FLS cashmere



Palma kaschmir



Palma torf



Supprimé

Sotega Star lead



Paratexa NF powder rose



Parotega NF light rosé



Topana FLS teint



Sotega FLS cyclam



Parotega NF kirsche



Topana FLS carob



Torino FLS carob



Parotega NF marsala



Parotega NF olivbraun



Soroma EN marone



Sorrento EN marone



Soroma EN cognac



Sorrento EN cognac



Sotega FLS cashmere



Palma niger



Sorrento EN choco



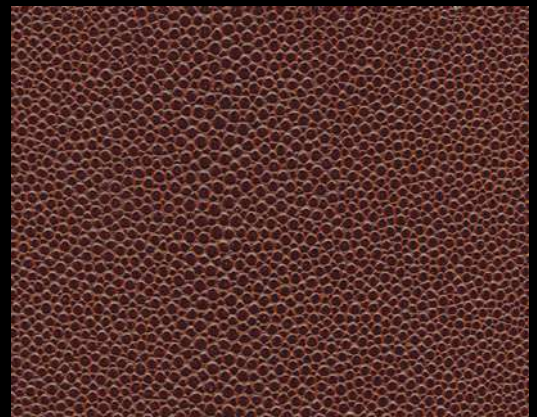
Sotega FLS smoke



Sarano buffalo



Sotega Stars brass



Soshagro EN chestnut-mocca



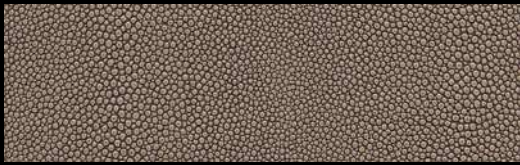
Palma olivbraun



Sarano schoko



Parotega NF schoko



Soshagro EN choco-cream



Paratexa NF fango



Sorrento EN fango



Palma taiga



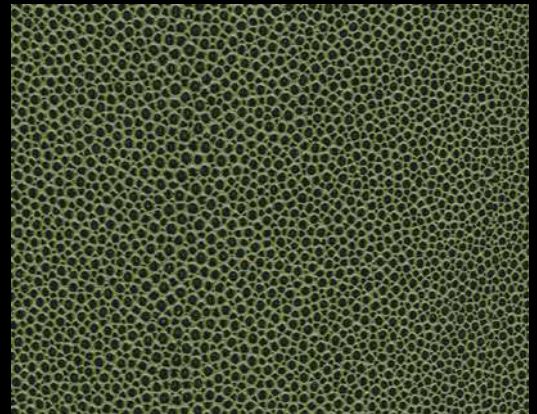
Palena avocado



Parotega NF olivgrün



Parotega NF smoke



Soshagro EN green-black



Palena jeans



Soshagro EN black-metallic



Sorrento EN navy



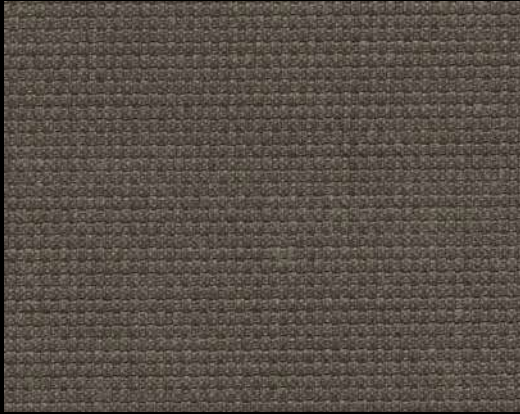
Parotega NF stone blue



Sotega FLS petrol



Palena baltic



Paratexa NF anthracite



Sorrento EN slate



Sorrento EN black



Soroma EN black



Paratexa NF black



Parotega NF silbergrau



Parotega NF schwarz



Sarano anthrazit



Parotega NF schiefergrau

Caractéristiques techniques Technical Specifications	Composition du matériel oder Composition du produit Material composition	Poids Weight (g/m ²)	Épaisseur Thickness (mm)	Laize Roll width (cm)	Résistance à l'abrasion Martindale	Résistance au feu Flame retardant
Matériel Material						
skai® Sorrento EN	approx. 1% PU-finish approx. 74% PVC-compound approx. 25% CO-fabric	780 +/-50	1,6 +/-0,2	150	> 50.000	DIN EN 1021-1+2, BS 5852 IS-0+1, MVSS302
skai® Soroma EN	approx. 2% PU-finish approx. 73% PVC-compound approx. 25% CO-fabric	780 +/-50	1,6 +/-0,2	150	> 50.000	DIN EN 1021-1+2, BS 5852 IS-0+1, MVSS302
skai® Soshagro EN		780 +/-50	1,7 +/-0,2	150	> 30.000	
skai® Sotega Stars		780 +/-50	1,7 +/-0,2	150	> 25.000	---
skai® Sotega FLS	approx. 1% PU-finish approx. 72% PVC-compound approx. 27% CO/PES-fabric	740 +/-50	1,45 +/-0,2	150	> 50.000	NF M2, BS5852 IS-0+1+5, DIN EN 1021-1+2, DIN4102 (Part 1, B2), MVSS302
skai® Sarano	approx. 1% PU-finish approx. 66% PVC-compound approx. 33% CO-fabric	610 +/-50	1,5 +/-0,2	150	> 25.000	DIN EN 1021-1+2, BS 5852 IS-0+1
skai® Paratexa NF	approx. 85% PVC-compound approx. 15% CO-knitted fabric	780 +/-50	1,3 +/-0,2	137	> 30.000	DIN 4102 (Part 1, B1), DIN 4102-1 (B2), DIN EN 13501-1 B, s3, d0, NF M1, AM 18, BS5852 IS-0+1+5, EN1021-1+2, VSS302, UNI 9175/87 (1.IM) skai® Parotega NF: 66084 P-a
skai® Parotega NF	approx. 85% PVC-compound approx. 15% CO-knitted fabric	780 +/-50	1,3 +/-0,2	137	> 50.000	
skai® Palma	approx. 89% PVC-compound approx. 11% CO/PES-knitted fabric	825 +/-50	1,3 +/-0,2	17	> 50.000	DIN 4102 (Part 1, B2), NF M2, BS 5852 IS-0+1, DIN EN1021-1+2, MVSS302
skai® Palena	approx. 90% PVC-compound approx. 10% CO/PES-knitted fabric	700 +/-50	1,25 +/-0,2	137	> 50.000	NF M2, DIN4102 (Part 1, B2), BS5852 IS-0+1, DIN EN 1021-1+2, MVSS302
skai® Topana FLS	approx. 1% PU-Finish approx. 84% PVC-compound approx. 15% CO/PES-knitted fabric	790 +/-50	1,4 +/-0,2	140	> 100.000	NF M2, BS5852 IS-0+1+5, EN 1021-1+2, DIN4102-1 (B2), MVSS302
skai® Torino FLS					> 50.000	

Nettoyage : pour l'entretien courant, il suffit de passer un chiffon humide bien essoré. Il est recommandé d'utiliser un chiffon en microfibres ordinaire. Pour les taches tenaces, utiliser une lessive pour produits délicats (type lainage).

Cleaning : solid areas can be cleaned with a damp cloth. Particularly recommended is the use of a commercially available microfibre cloth. Stubborn stains require treatment with a commercial mild action detergent.

You may find our entire collection, complete with additional information, on www.skai.com

Collinet sas
4, rue du Moulin
55130 Baudignécourt
France

Tél. : (33) 0-329 89 61 06
Fax : (33) 0-329 89 77 01
E-mail : contact@collinet-sieges.fr
www.collinet-sieges.fr
